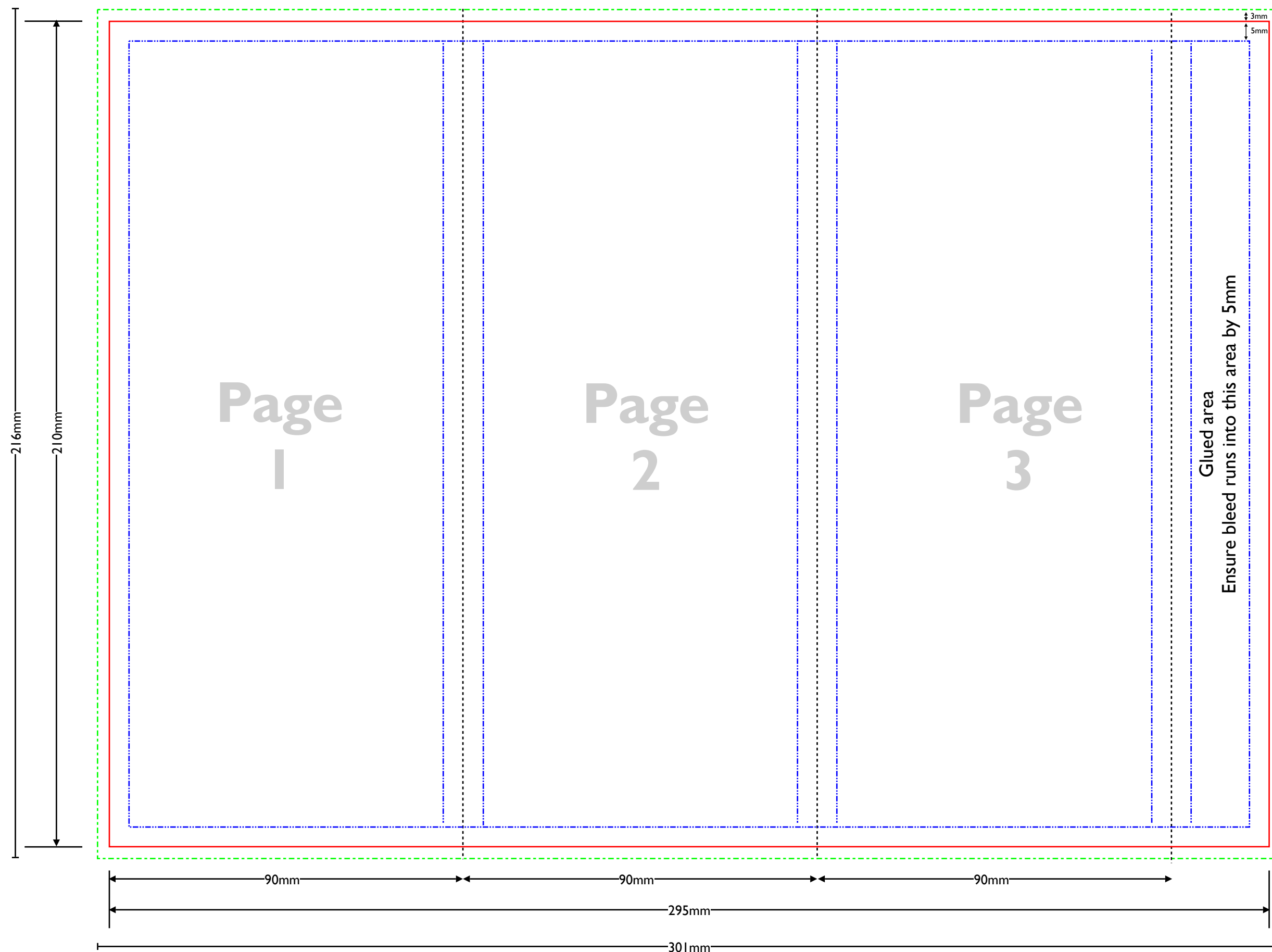


# Standup Desk Calendar Print Template

295 x 210mm (3 x 90mm Panels)

Artwork should be supplied in jpg or pdf format at 300dpi with text converted to outlines (pdf) and transparencies flattened (pdf)



**Document edge** - this is the final size of the document and indicates where the paper will be trimmed to (also indicated by the black crop marks).

**Bleed area** - 3mm out from **Document edge** on all edges. Bleed is printing that goes beyond the edge of where the sheet will be trimmed. In other words, the bleed is the area to be trimmed off to allow for a neat finish and edge to edge printing. All background colours and images should extend to this line.

**Gutter** - 5mm in from **Document edge** on all edges. All text, logos, images and other graphic elements should be kept within this area to ensure they are not trimmed during the finishing process.

These lines are for indication only and should be removed from the final graphic.

If you require any help please contact us on [info@braunstonprint.co.uk](mailto:info@braunstonprint.co.uk)

Glued area  
Ensure bleed runs into this area by 5mm

01604 626265

[info@braunstonprint.co.uk](mailto:info@braunstonprint.co.uk) • [www.braunstonprint.co.uk](http://www.braunstonprint.co.uk)  
3d Manor Business Park, Woodford Halse, Northamptonshire NN11 3UB